

THE ISLE OF ARRAN PARISH 2023

PARISH PROFILE

LOCHRANZA

BRODICK



SHISKINE

WHITING BAY

ARRAN

Arran is known as "Scotland in miniature" and a "geologists paradise."

The island lies in the Firth of Clyde between Ayr, Ardrossan, and Kintyre. It has an area of 167 square miles with the highest elevation of Goat Fell at 2867 feet.

The island includes miles of coastal pathways, numerous hills and mountains, forested areas, rivers, small lochs and beaches.



The latest figure for population size is from the census of 2011 and stands at 4629. There are seven primary schools (total roll 227) and one high school (roll 241) on the island.

Arran has several villages, mainly around the shoreline. Brodick (Old Norse: 'broad bay') is the site of the ferry terminal, several hotels, and the majority of shops. Other villages include Lamlash, Lochranza, Pirnmill, Corrie, Blackwaterfoot, Kilmory, Kildonan and Whiting Bay.

Arran is connected to the Scottish mainland by two ferry routes operated by Caledonian MacBrayne (CalMac). The Brodick to Ardrossan service is provided by MV Caledonian Isles, with additional summer sailings by MV Isle of Arran (currently MV Alfred). A service to Lochranza is provided by MV Catriona from Claonaig in summer and from Tarbert in winter.

There are three main roads on the island. The 90 km (56 mi) coast road circumnavigates the island. The other two roads run across from the east to the west side of the island. The main cross-island road is the 19 km (12 mi) B880 from Brodick to Blackwaterfoot, called "The String". About 10 kilometres (6 mi) from Brodick, a minor road branches off to the right to Machrie (Machrie Moor Road). The single-track road "The Ross" runs 15 kilometres (9 mi) from Lamlash to Lagg and Slidery via Glen Scorrodale.

The island has a public bus service operated by Stagecoach. The main bus terminal on the island is in Brodick at the Ferry Terminal.

The main industry on the island is tourism, with outdoor activities such as walking, cycling and wildlife watching being especially popular. Popular walking routes include climbing to the summit of Goat Fell, and the Arran Coastal Way, a 107 km (66 mi) trail that goes around the coastline the island.

The island has a number of golf courses including the 12 hole Shiskine links course which was founded in 1896.

Farming and forestry are other important industries.

There are two distilleries on the island, producing Isle of Arran whisky in two locations – Lochranza and Lagg.

The Isle of Arran Brewery is a microbrewery founded in March 2000 in Cladach, near Brodick.

It makes eight regular cask and bottled beers.

Other businesses include Arran Aromatics, which produces a range of luxury toiletries, perfumes and candles, Arran Dairies, Arran Cheese Shop, James's Chocolates, Wooleys (Bakery) of Arran.

Red deer are numerous on the northern hills, and there are populations of red squirrel, badger, otter, adder and common lizard. Offshore there are harbour porpoises, basking sharks and various species of dolphin.

Over 250 species of bird have been recorded on Arran, including black guillemot, eider, peregrine falcon, golden eagle, short-eared owl, red-breasted merganser and black-throated diver.

The Isle of Arran Churches

The Isle of Arran Church of Scotland Parish came into existence on 1 September 2023. As such, we are still in the process of organizing this very new parish which is an amazing opportunity for the person who would very much enjoy being in at the start.



The Union was celebrated on the 1st of October with a special communion service, lunch and cake!



There are four worship centres in the parish, situated in the north (Lochranza), south (Whiting Bay), east (Brodick) and west (Shiskine) of the island.

PA systems are installed in all the buildings, but it is hoped in time to upgrade to multimedia systems.

Whiting Bay, Brodick and Shiskine have their own hall, kitchen, and toilet facilities. Lochranza has toilet facilities. Shiskine has its own parking area while Lochranza, Brodick and Whiting Bay have parking available at the roadside.

Photos of the outside and inside of each worship centre are at Appendix A.

The Church in the Community

The minister and MDS worker will have the opportunity to visit the seven primary schools at the invitation of the Head Teachers and to take part in end-of-term services (eg Easter and Christmas) which are organised by the school staff.

A number of coffee mornings take place in the churches around the island, either once a month or weekly, organised by members of the congregation. These are well attended by all sections of the community and is an opportunity for outreach.

The island's Food Bank is in Brodick church which is open 24/7. It is managed by volunteers from Arran Churches Together (ACT), with contributions coming from every church, other organisations and individual members of the community. In addition, the churches or their halls host Food Share and Zero Waste for the villages.



The organisation 'Arran Churches Together' (ACT) brings together all the denominations represented on the island, including Roman Catholic, Free Church, Scottish Episcopal, Baptist and Quaker. Special services are organised, such as Songs of Praise, Easter Walk of Witness and World Day of Prayer.

Other local religious organisations are the Sannox Christian Centre and the Buddhist retreats; one on the Holy Isle and the other at Glen Scorrodale.

The Manse

The manse is situated in Brodick, a few minutes' walk from the ferry. It is a brand new, purpose-built house which fully meets the requirements laid down for a manse. It was completed during the Covid pandemic. However, by then there was no minister, and so it has not been occupied to date. In addition to being a state-of-the-art building, it offers spectacular views across Brodick Bay to the castle and Goat Fell.

A selection of photos is available at Appendix B.

Presbytery

The Isle of Arran Parish is in the newly created Presbytery of South–West Scotland. The presbytery plan has allocated one Minister of Word and Sacrament and one MDS worker or deacon to our parish.

Departure from Church of Scotland Practice in Relation to Human Sexuality

TBC

Statistics

NAME	DATE FIRST OPENED	COMMUNION ROLL	ADHERENTS ROLL	AVERAGE WEEKLY ATTENDANCE	AGE PROFILE	NUMBER OF FUNERALS IN LAST 5 YEARS
St Brides Brodick	1910	100	19	30	Over 50	38 (Incl Corrie)
Lochranza St Brides	1712	44	10	16	55-95	25
St Molios Shiskine	1889	43	8	20	16-24 0 25-44 1 45-64 7 64-84 22 85+ 13	24
Whiting Bay St Donans	????	56	2	20-30	60-90	175 (Incl Lamlash & Kilmory)

Staff

The church buildings either have an employed cleaner or operate a Rota of volunteers from the congregation.

Activities and Outreach

Youth work is most obvious in Whiting Bay during the summer when the Scripture Union campers and Boys Brigade are involved in church activities. Whiting Bay church has had a long association with the Scripture Union Mission and its campers over the summer and welcomes the Eaglesham BB to services each year at Glasgow Fair for 60+ years. The minister and others have a close association with Brian Fraser who was the captain for many years and visited their camp.

There are many activities which happen in some or all the churches:

- In addition to the regular Coffee mornings or afternoons, the St Molios Garden party has been well attended over several years.
- Messy Church is proving popular (with between 20 and 30 primary school children attending) as is the Warm Room initiative (up to 24 visitors popping in over the 3 hours) and Café church.



- The Guild holds monthly meetings, often with guest speakers from the various projects they support. It also organizes several fund-raising events throughout the year. Particularly popular is the annual BBQ.



- Over many years a highly successful Christian Aid week was organized involving many volunteers who collected around the island. This had to be discontinued during Covid and now a Coffee Morning and a Sunday offering is dedicated to raising funds for Christian Aid.
- There are regular meetings of a bible study group which is open to all.

Worship

Sunday morning worship

There are four services each Sunday. Presently the locum and one pulpit supply person each conduct two services, between Lochranza/Shiskine and Whiting Bay/Brodick. There are four Readers on the island who have participated, not only in worship, but in many other tasks including funerals. This is a bonus to the future ministry on the island since they could offer support in different ways and pulpit supply, for example when the minister/MDS are on annual leave.

The form of worship is generally traditional, however, there is an openness to try informal worship such as cafe church.

There are several versions of the bible used across the four worship centres.

Music is provided by organists and a variety of other local musicians. The hymn books used are CH4, Mission Praise and several other publications including, for example, "Shiskine Songs". The hymns at Whiting Bay and St Donan's are projected onto a screen behind the pulpit.

A service is recorded fortnightly and then uploaded to YouTube with links on the web sites. This recording is watched by islanders who are unable to get to a service and by former Arran residents in such countries as Australia, New Zealand and Spain.

On the last Sunday of each month there is a third service in the Care Home in Brodick (Montrose House).

The Sacrament of Holy Communion is celebrated quarterly.

A number of Holy Week services take place across the island and there is a Labyrinth laid out in St Molios which is open to the whole island.

Other worship

The churches are involved in many other services:

- The villages which have a war memorial have an Act of Remembrance which has been conducted by the minister(s), Parish Assistant and Readers.



- There is an annual HMS Dasher service held every year at their memorial at the ferry terminal.
- The annual Clachan service is held in the original church for Shiskine, attended by all denominations and members of the wider community.
- There is a Preaching Cave service – held in what was the preaching cave on the shoreline near Blackwaterfoot, also attended by all denominations on the island.
- A local farmer hosted a Blessing of the Lambs service.
- Taize service is held once a month which is open to all.
- Prayers for Health and Healing are also held each month.
- There are services on Christmas Eve and Christmas Day across the island.
- A Christingle service is often held in several worship centres during December.



The Kirk Session

The newly formed Isle of Arran Kirk Session has been set up and has the potential to introduce new practices and to encourage an island-wide ethos. It is advised by the Interim Moderator, Rev Tom Macintyre.

There are presently 36 elders.

New appointments have been made including Session Clerk, Depute Session Clerk, Property Team Leader and Treasurer. It is envisaged that the members of the Kirk Session will work in teams, as they identify the areas of mission and practical tasks required in a new setting. This will be an opportunity for elders to develop their particular strengths. With the Unitary Constitution in place, there is potential for former board members and church members to increase the working capacity of the Kirk Session.

A Team Remits document is at Appendix C.

Mission Statement

The Isle of Arran Parish is a friendly, warm welcoming and all-inclusive congregation striving to serve God and the community in worship, faith, fellowship and action. It is a place where people know they are accepted, valued, loved and cared for by God's grace.

The Five Marks of Mission are being addressed through the formation of KS teams, which, in collaboration with the Minister, and utilising the talents and energy of the congregation, will reach out to serve the wider community. Volunteer assistance is available to the minister. We are keen to facilitate this through working in partnership with all organisations and individuals on the island who are willing to share their talents, envisaging that this will allow the congregation to thrive for years to come.

Financial Review

With the approval of OSCR a new bank account has been set up. There is a team of past treasurers for the individual churches who are already working well in partnership. A full Financial Statement will be in place in the near future. At this time, it is only possible to offer a summary of the newly merged accounts.

Outlook

The work of the Readers and Locums has been crucial during a long period of vacancy and radical adjustment. They have declared themselves ready to assist as part of a ministries team if required.

It is unfortunate that we cannot have a full picture of how finances are going to look at this stage. We will have, however, combined capital resources to enable development.

Numbers attending church have not returned to pre-Covid levels. The Kirk Session will need to address this, with encouragement from our new Minister. We hope more may return to church and play a part in our mission to the communities in which we are placed.

Thought needs to be given by the Kirk Session to the approach during the current economic situation and it is acknowledged that there is pressure on church finances due to high inflation. For future major expenditure, we need to plan fundraising and have funding in place prior to implementation.

Additional Information

The links below provide more information about the churches:

<http://stmoliosshiskine.org.uk/>

<http://lochranzachurch.org.uk/>

<http://brodickchurch.org/>

The construction of a new web site for the Isle of Arran Church of Scotland Parish is currently being investigated.

Appendix A

BRODICK



WHITING BAY



SHISKINE



LOCHRANZA

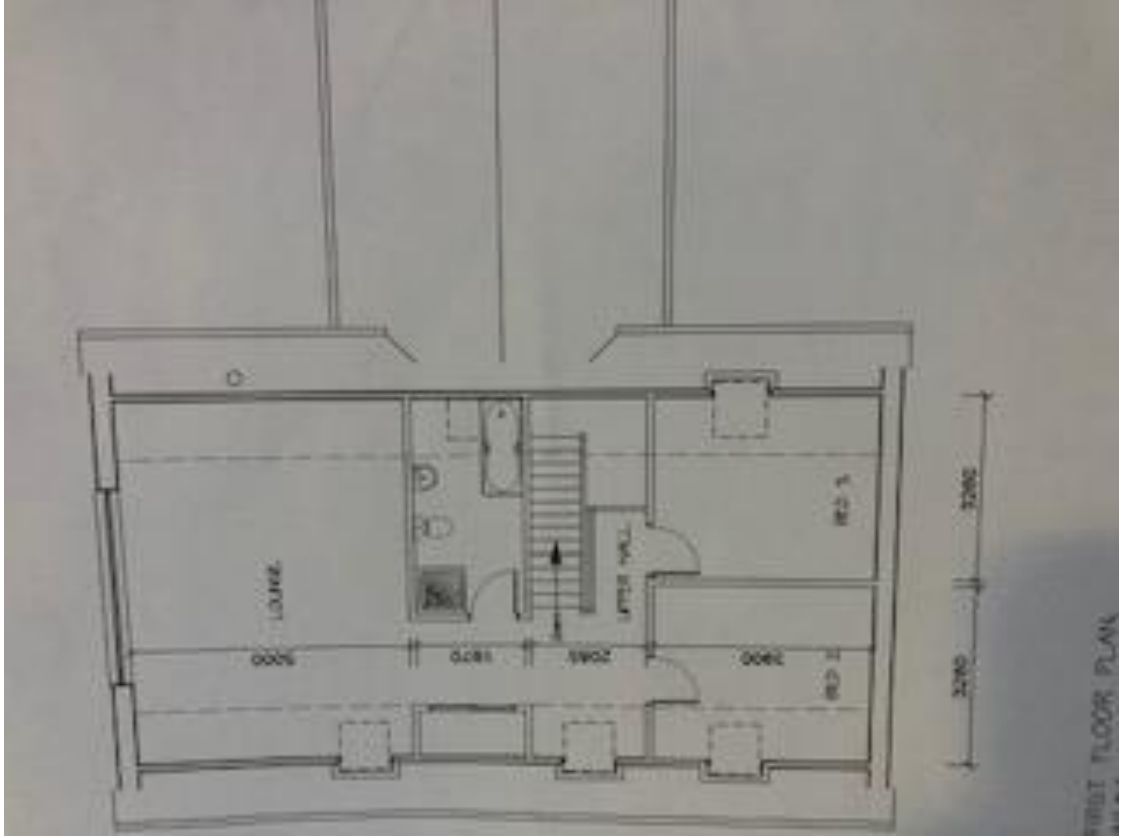


Appendix B

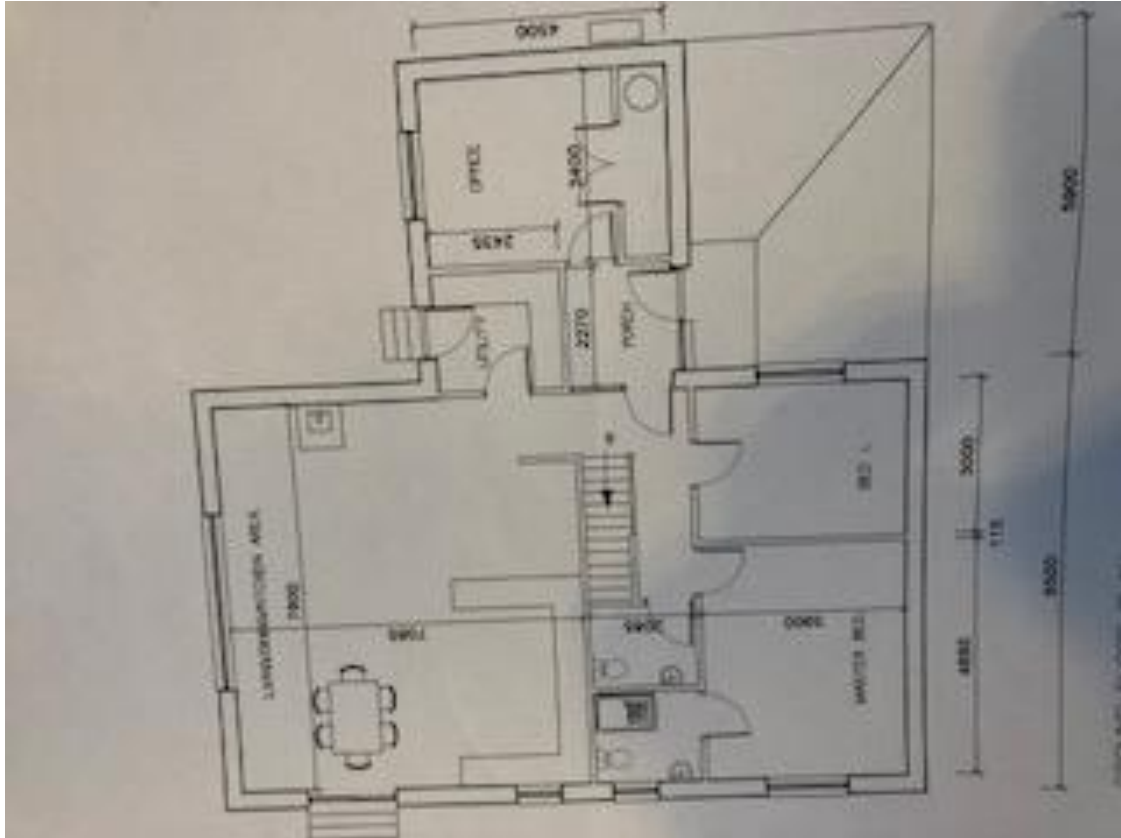
THE MANSE







FIRST FLOOR PLAN



Appendix C

Kirk Session Team Remits

Mission and Discipleship Team

Responsible for Outreach, Mission, and Discipleship.

Including:

- Initiate and develop Parish outreach e.g. Food bank, Warm Room, Coffee mornings, 'Vintage Messy Church', Care home visits etc.
- Advise on Bible Study, Prayer groups, Alpha Course Training
- Draw on Presbytery and National resources for Teaching and Outreach
- Maintain links with other denominations on Arran
- Support the Guild, its projects and twinning with Malawi
- Coordinate corporate prayer times e.g. World Day of Prayer

Communications:

- Produce parish magazine, Christmas, Easter leaflets etc.
- Streaming and recording services uploading to the website for public viewing liaising with IT Team
- Media policy agreed by KS
- A small group will need to be set up to initiate a Website/Facebook/IT/AV

Young People and Families Team

Responsible for all youth work of the parish

Including:

- Developing strategies for youth work in local areas and Arran-wide
- Encourage ministry to local schools.
- Ensure youth ventures are properly funded, staffed and supported.
- Advise on appropriate mission resources.
- Maintain links with Arran Youth Foundation, Scripture Union and other youth organisations.
- Coordinate Messy church and café church initiatives.

Pastoral Care team

Responsible for coordinating pastoral care around the island

Including:

- Local pastoral care teams – maintaining confidential pastoral care lists
- Organising visits, home communion, arranging transport or designated drivers to take people to church, social events and hospital visits
- Looking out for new people moving into the area and offering welcome
- Maintaining and distributing welcome packs with information about local places of worship and times of services and church activities.

Safeguarding Team

Responsible for the safeguarding in all churches and halls for the protection of the young and vulnerable in the community who come to church functions.

Including:

- Deal with matters confidentially as required
- Ensure that all staff and members working with vulnerable groups and the young are suitably registered under a PVG or Basic Disclosure scheme.
- Assist with the applications for disclosures.
- Keep up to date with any directives and guidance from Presbytery Safeguarding or Church of Scotland.
- Oversee any training and register updates as people move or stand down from active duties.

Finance Team (*Treasurer – Mandatory under the Deed of Constitution Section 5*)

Responsible for all aspects of congregational finance

Including:

- Offerings, accounts, preparing budgets, Gift Aid, OSCR
- Remuneration of employees, pulpit supply, organists.
- Utilities and Buildings Insurance
- Stewardship
- Assistance for outreach and projects
- Distribution of allowances to local church centres for running costs
- Application for sponsorship, grants, Consolidated Fabric Fund assistance via SW Presbytery and General Trustees for major building projects

Fabric Team (*Fabric Officer – Mandatory under the Deed of Constitution Sect. 7*)

**Responsible for all aspects of church property maintenance,
improvements and new work where required.**

Including:

- Care of fabric, fixtures and fittings and grounds
- Maintenance of property register
- Obtaining quotes from contractors
- Health and safety (designated named person)
- Reducing carbon footprint
- DDA requirements to and around buildings
- IT and AV upgrades and installations
- Liaising with General Trustees and Artistic Merit as required
- Commissioning feasibility studies, design and supervisory works for major buildings work.